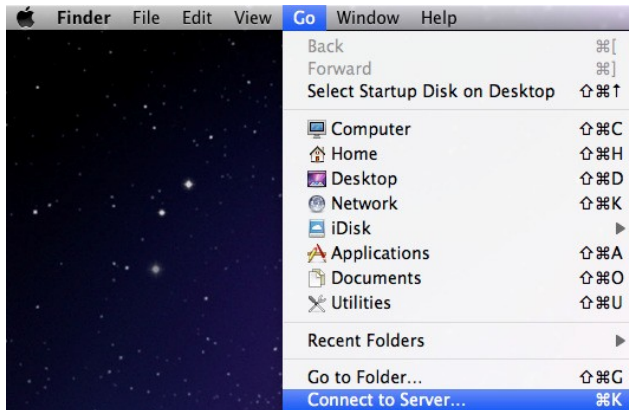


Accessing the Analytical Centre Staff file share from a MAC

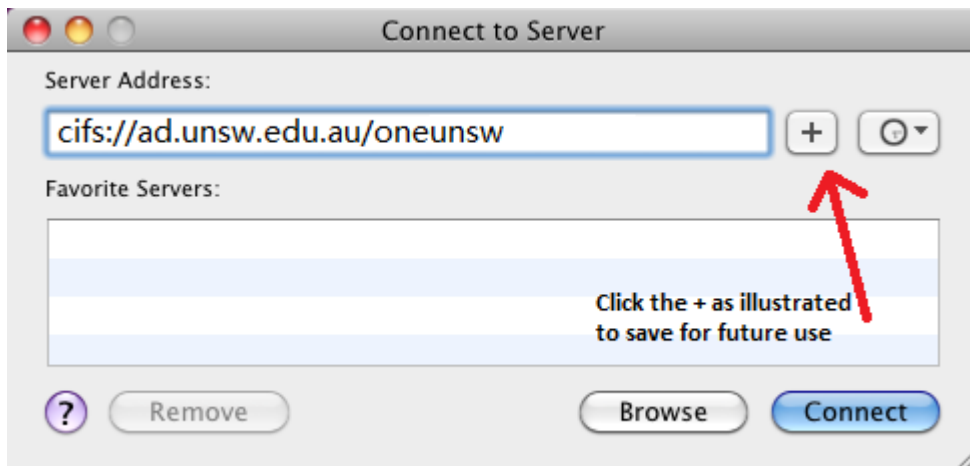
Click the finder icon in bottom left corner of screen.



On the top of the screen click “Go” and then Connect to server as illustrated below.



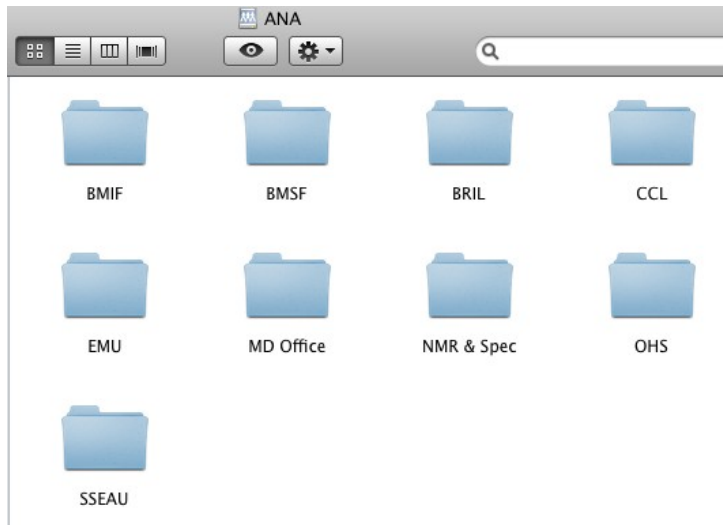
Type the address below and click “Connect” as illustrated below.



You will get a prompt for a username and password as below, enter your zID and password and click “Connect”.



A folder list will appear similar to below. The folders you can see will depend on the access rights appropriate to your work area.



Opening a document

After you mount the drive as earlier in this document illustrates you will have a shortcut on your desktop as below.

Double click this shortcut when you want to access the file system. After you reboot your mac you will need to mount your drive again.

