
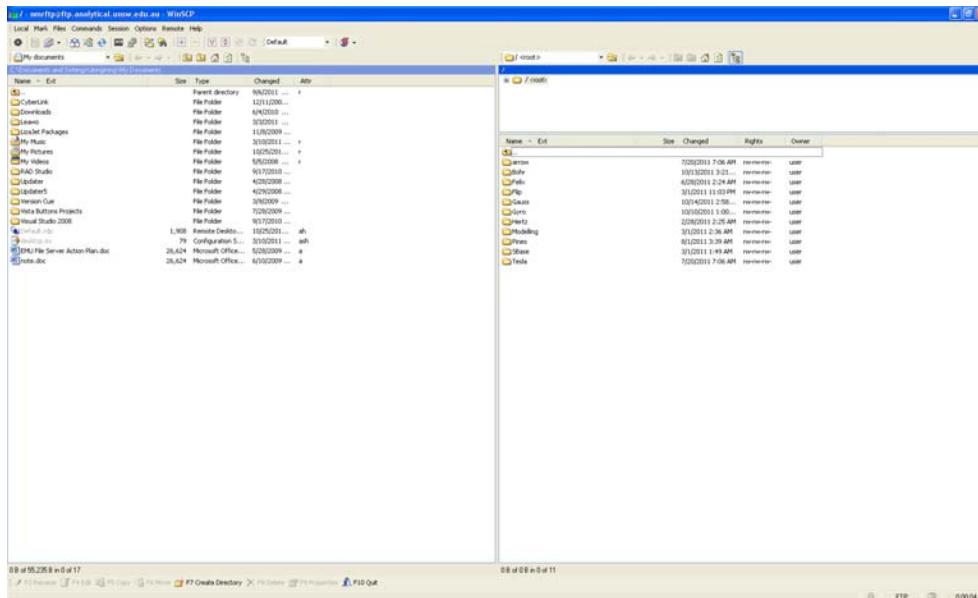


# FTP Access to Data at Analytical Centre

There are two options to access data through FTP at Analytical Centre as below:

1. Through FTP client: 

- Download WinSCP FTP program at <http://winscp.net/eng/download.php> or other FTP client programs on market. Then Install it to your local computer and run it, please refer to its user guide for operation.
- Screenshot of WinSCP: working similar to Windows Explorer



2. Through internet browsers:

- Logon to ACLS (Booking System), on Dashboard page (home page), click on button “Click to access”.

My Experiment Data	▶ Access to data through FTP client program (for example, WinSCP and FileZilla):	<input type="button" value="Click to receive FTP information"/>
	▶ Access to data through direct links using internet browsers (IE, Firefox, Chrome):	<input type="button" value="Click to access"/>

- In the example below, access data through IE:

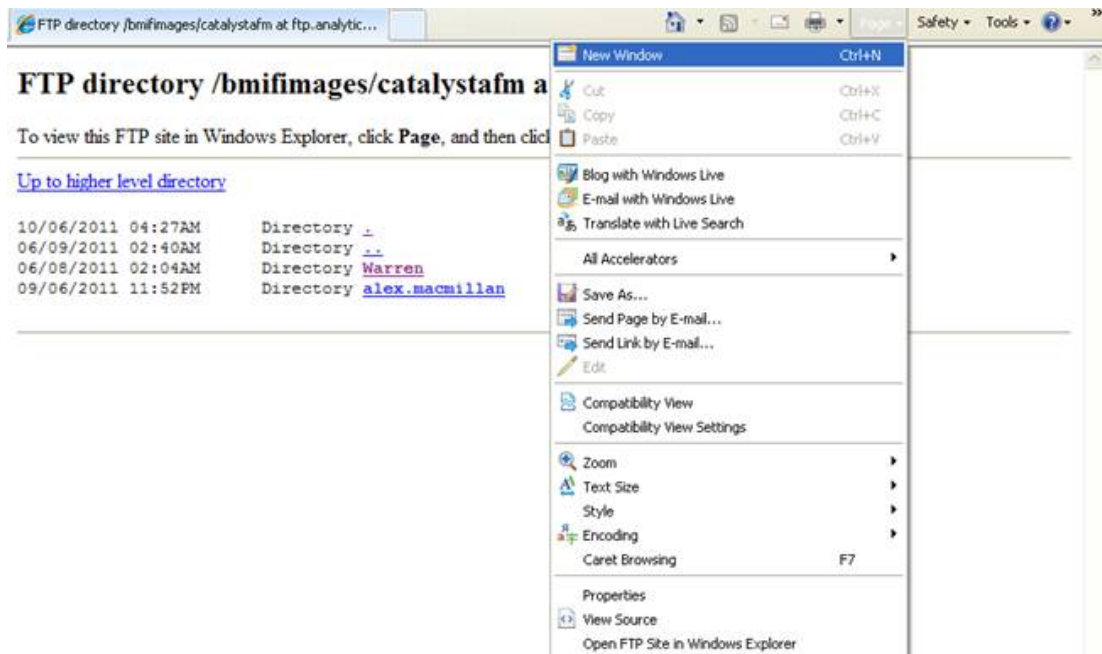
### FTP directory /flip at ftp.analytical.unsw.edu.au

To view this FTP site in Windows Explorer, click **Page**, and then click **Open FTP Site in Windows Explorer**.

[Up to higher level directory](#)

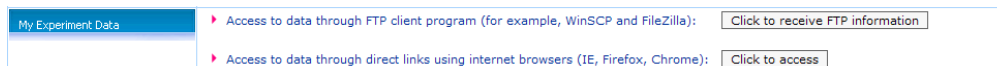
```
03/01/2011 11:03PM Directory .
10/10/2011 12:56AM Directory ..
10/25/2011 12:16AM Directory data
```

- To achieve bulk data download in IE, go to last tab in Pages, “Open FTP Site in Windows Explorer”.



### 3. FTP Authentication Information:

- Logon to ACLS (Booking System), on Dashboard page (home page), click on button “Click to receive FTP information”. ACLS sends FTP authentication information to you through email.



### 4. General:

FTP access password is changed regularly every 6 months as part of security measures. So if you cannot connect to FTP, please logon ACLS (Booking System) to acquire the updated FTP authentication information.